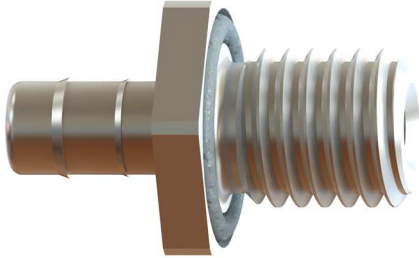


Simple Penetrator SPN-110X

Features



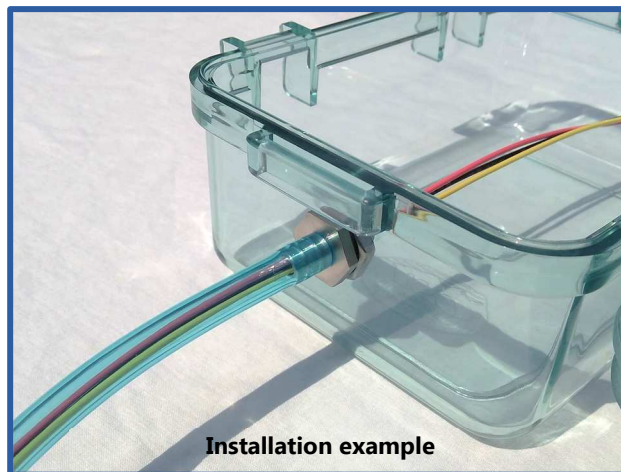
- Reliable, inexpensive bulkhead penetrator
- No potting required
- Compatible with Blue Trail Engineering polyurethane tubing
- Compact size
- Corrosion-resistant 316 stainless steel construction

Description

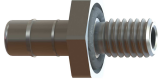
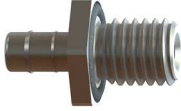
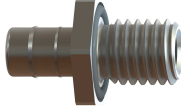
The Simple Penetrator is the most affordable, simple, and reliable way to make a submersible electrical connection between two enclosures or devices. Simply install a Simple Penetrator on each enclosure or device and connect with a length of polyurethane tubing. The barbed portion of the Simple Penetrator reliably seals to the polyurethane tubing while the O-ring seals to the surface of the enclosure or device.

Any wire or cable of appropriate size, including coaxial cable, can be passed through the Simple Penetrator and polyurethane tubing. Replacement of the wire or cable is as simple as pulling out the old one and replacing with a new one, without ever needing to remove the Simple Penetrator from the enclosure or device.

The Simple Penetrator is available in three versions and can be used with tubing ranging from 5/32" (4.0 mm) inner diameter to 1/4" (6.4 mm) inner diameter.



Versions

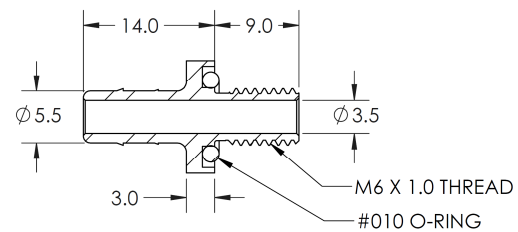
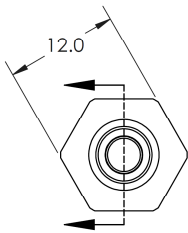
Description	SKU	Thread size	Tubing compatibility	Image
Simple Penetrator, M6	SPN-1103	M6 x 1.0	<ul style="list-style-type: none"> • 8mm OD x 5mm ID Blue (TUB-1201) • 1/4" OD x 5/32" ID Black (TUB-1101) 	
Simple Penetrator, M10	SPN-1104	M10 x 1.5	<ul style="list-style-type: none"> • 8mm OD x 5mm ID Blue (TUB-1201) • 1/4" OD x 5/32" ID Black (TUB-1101) 	
Simple Penetrator, M10, large	SPN-1105	M10 x 1.5	<ul style="list-style-type: none"> • 3/8" OD x 1/4" ID Red (TUB-1301) • 8mm OD x 5mm ID Blue (TUB-1201) 	

Dimensions

All dimensions are in mm.

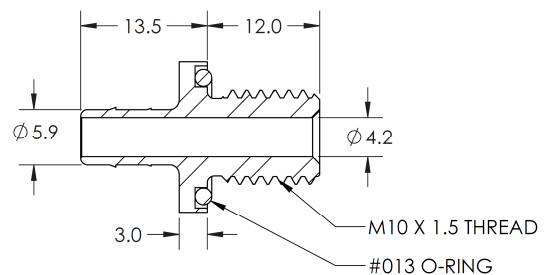
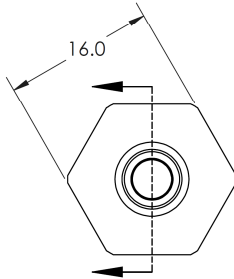
SPN-1103

M6



SPN-1104

M10



SPN-1105

M10 large

